

# SSHERPa

*Staffordshire and  
Shropshire Health Economy  
Research Partnership*

*Helen Duffy, R&I Programme Manager  
(SSHERPa)*

*Ruth Lambley-Burke, Head of R&I  
Midlands Partnership NHS Foundation Trust*



## SSHERPa - Building research into Integrated Care Systems

### SSHERPa Part 1: 2019

- CRN Bid – funding
- Workshops
- Questionnaire to partners
- Board papers – Execs/STP/ICS

## Achievements

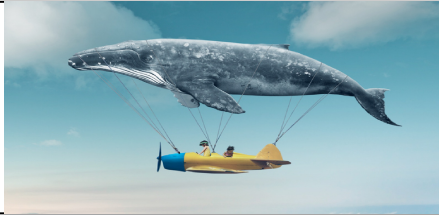
- Established **two ICS R&I Committees**
- System stakeholder engagement: 17 partners NHS, LA, HEI, CRN, AHSN
- Programme support in place, funding secured for 2022/23
- Communications strategy & socialisation of SSHERPa
- Qualitative Research Study

## Values for Partnership

Achieving more by working together

- Co-create, share responsibility
- Common understanding of aims
- Collective agreement of priorities
- Translation of priorities into actions via working groups
- Capacity building
- Respect and recognition
- Continuous communication
- Clear and relevant goals
- Mutual benefit

## Along the way!



### ***Sticky issues/reality***

How to 'host'

Competition versus recognition

Sign up versus approval

Developing NHS & research ecosystem

Funding

Capacity

### ***Excitement & opportunity***

Very positive responses to questionnaire

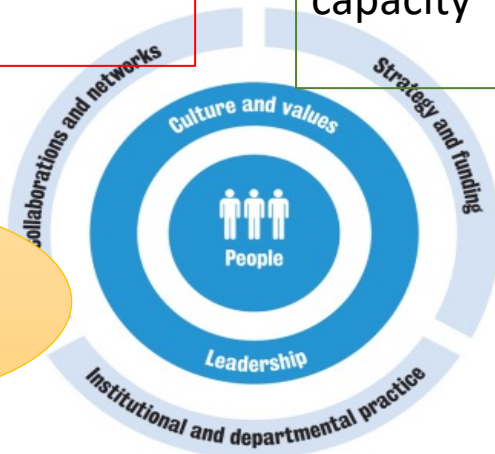
Appetite to engage

Leading the way

ICS embracing papers

Funding/, new capacity

"we speak different languages"



.... be prepared to lend a hand..

## Next Steps for SSHERPa (part 2)

- Developing membership: voluntary sector, PPIE
- Task and Finish Groups
  - Research Governance
  - Data sharing
- Scoping - ICS R&I Strategy & Framework
  - Workforce
  - Capability & capacity
  - Local priorities: health inequalities, underserved communities
  - SSHERPa prospectus/ICS Comms

# SSHERPpa

*'Staffordshire and Shropshire  
Health Economy Research  
Partnership'*



Keele University  
Midlands Partnership NHS Foundation Trust (host/exec sponsor)  
NHS Shropshire Telford & Wrekin ICB  
NHS Staffordshire & Stoke-on-Trent ICB  
(NHS Staffordshire and Stoke-on-Trent CCGs/NHS Shropshire,  
Telford & Wrekin CCGs)  
North Staffordshire Combined Healthcare NHS Trust  
Robert Jones & Agnes Hunt NHS Foundation Trust  
Shrewsbury and Telford Hospital NHS Trust  
Shropshire Community NHS Trust  
Shropshire Council  
Stoke-on-Trent City Council  
Staffordshire County Council  
Staffordshire University  
Telford and Wrekin Council  
University Hospitals of North Midlands NHS Trust  
Vast Staffordshire  
West Midlands NIHR Clinical Research Network  
West Midlands Academic Health Science Network

"build on  
strengths but be  
ambitious – show  
a difference in 4  
years time"

"Need to be  
inclusive"

"We need to  
be prepared  
to lend each  
other a  
hand"

'a key priority  
is dialogue'

"need to  
maximise this  
opportunity"  
and "own it"

It's a  
competitive  
market...so  
let's  
celebrate  
collectively

"its about leaders  
motivating others,,  
leading the way to make  
the change

"the key will be health and  
care professionals  
working together with  
academics & managers'

"We should not  
get focused on  
function....but be  
prepared to lend a  
hand where others  
don't have the

"we speak  
different  
languages"

