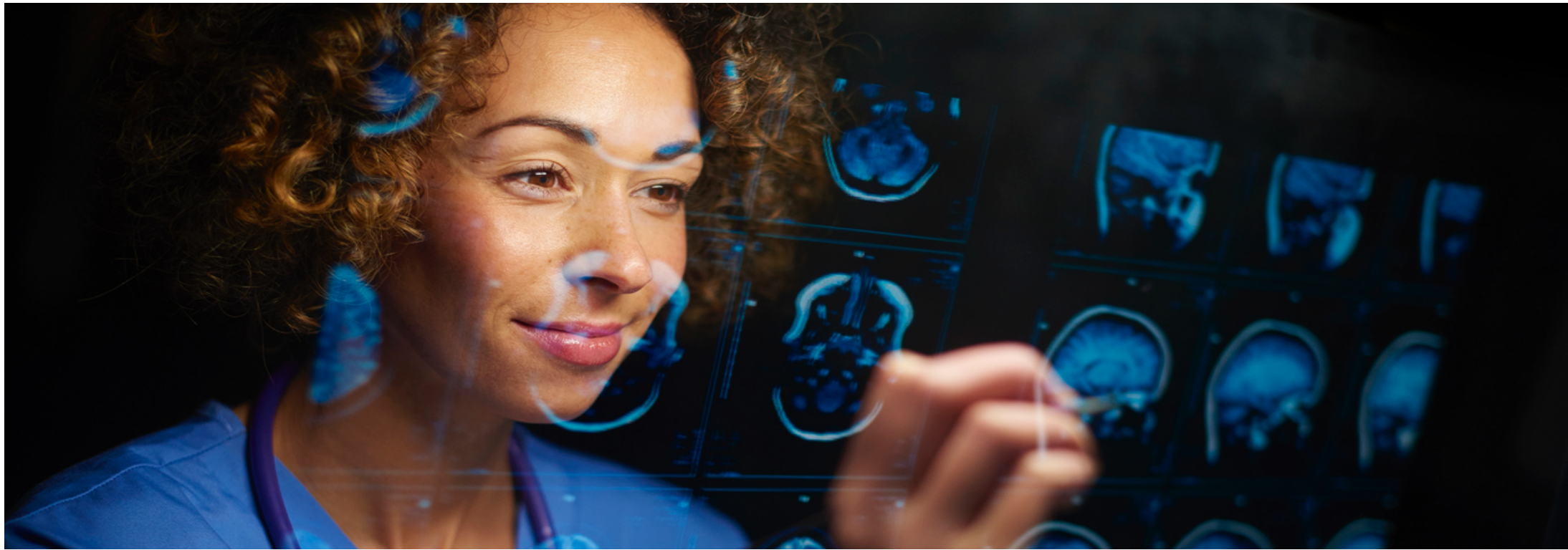


Restart/ Recovery/ Resilience/ Responsibility – what's the new reality?



Restart

- Coping with COVID
- Changing studies
- Stopping studies
- Restarting recruitment

<https://www.hra.nhs.uk/covid-19-research/covid-19-guidance-sponsors-sites-and-researchers/>

Recovery

- Restoring the portfolio
- Starting new studies
- Sites/ Labs/ Tests
- Embedding research in clinical recovery

Resilience

- Money
- Resources
- Money
- Time

Responsibility

- CI vs sponsor
- Designing differently
- Taking risks

New reality?

- Cross-sector commitment
- Improving collaboration
- Improving integration
- Optimising pathways
- Using digital and data



**Health Research
Authority**

Thank you for listening

Contact information:

- **Janet Messer**
- janet.messer@hra.nhs.uk

Follow us on Twitter **@HRA_Latest**

Sign up for our monthly newsletter at **www.hra.nhs.uk**