

Fast Tracking Research: a Sponsor Perspective



9th December 2020

Dr Karen Melham
Senior Clinical Research Support Manager
karen.melham@admin.ox.ac.uk



UK policy framework for health and social care research

Sponsor “...takes on overall responsibility for proportionate, effective arrangements being in place to set up, run and report a research project.”



*Proportionate
Effective*

Assessment
Oversight

Guidance
Training

Sponsorship review



Attention

Communication

Collaboration

Fast tracking

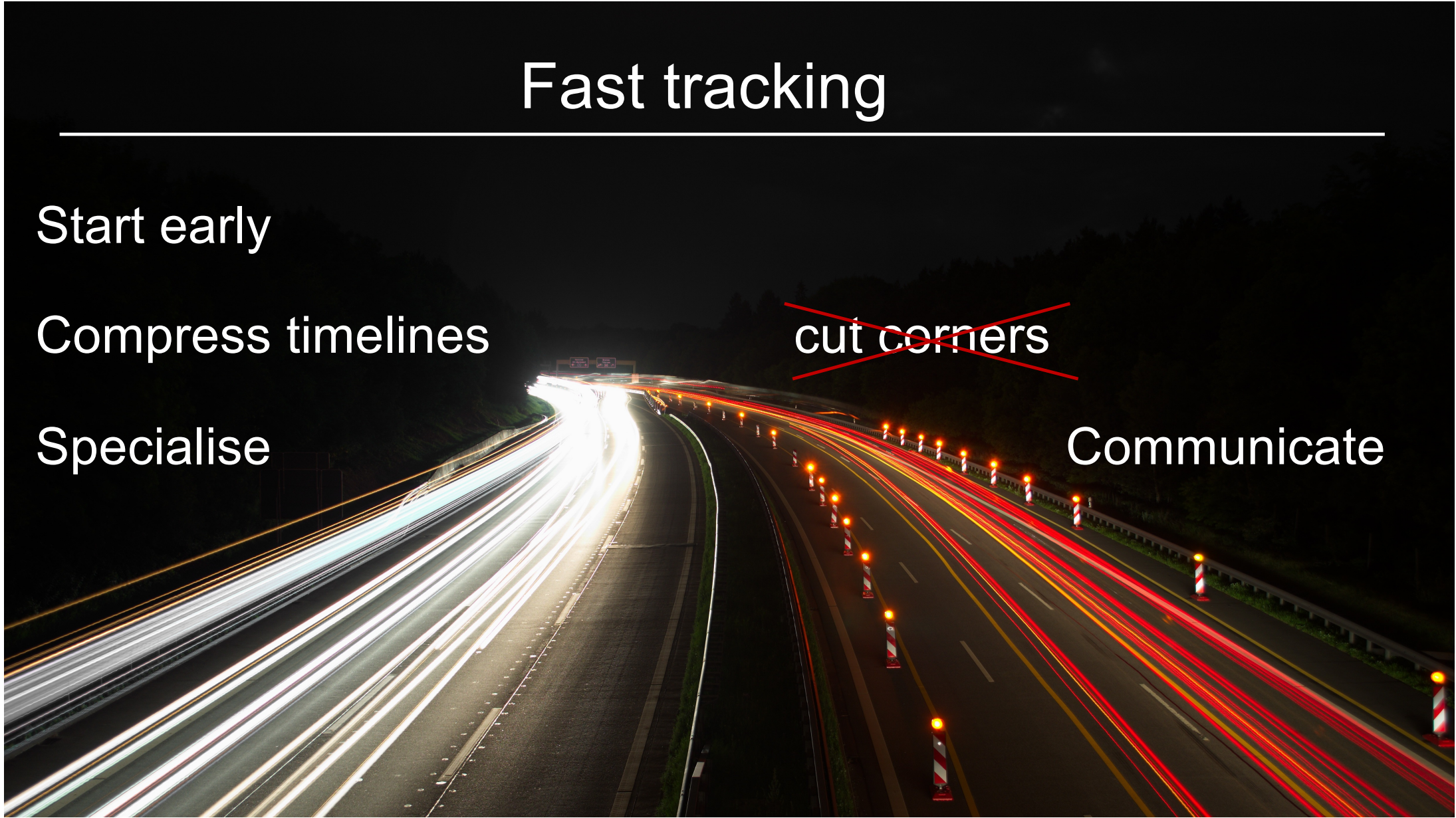
Start early

Compress timelines

Specialise

~~cut corners~~

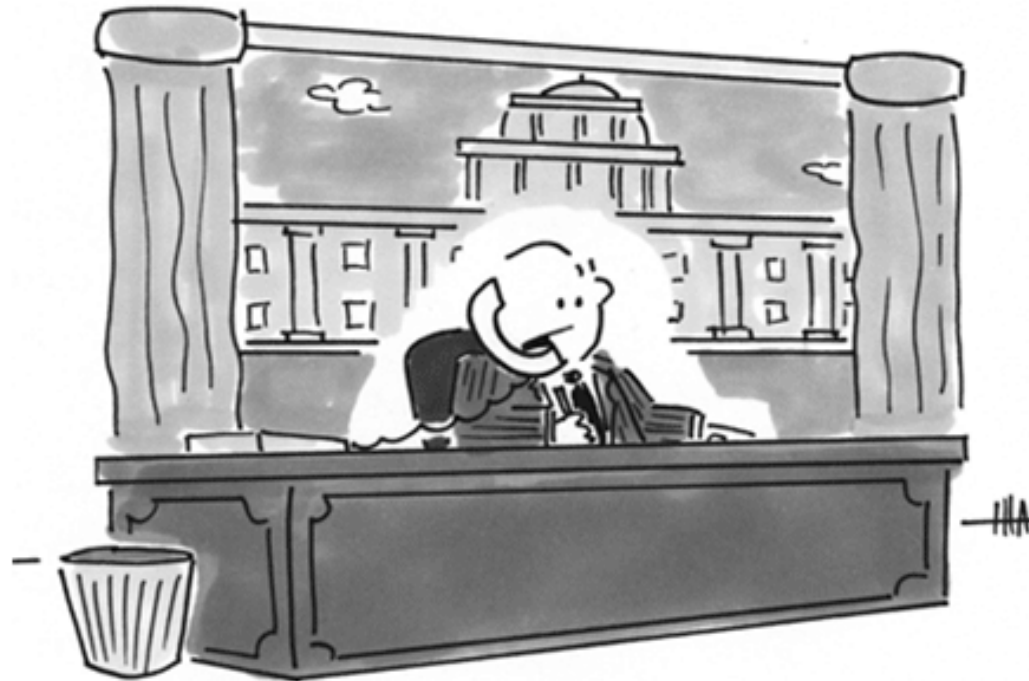
Communicate



Ongoing Oversight

© MARK ANDERSON

WWW.ANDERSTOONS.COM



"No, it's too late for the oversight committee,
send it to the hindsight committee."

Sustainability

Prioritisation

Equity

